

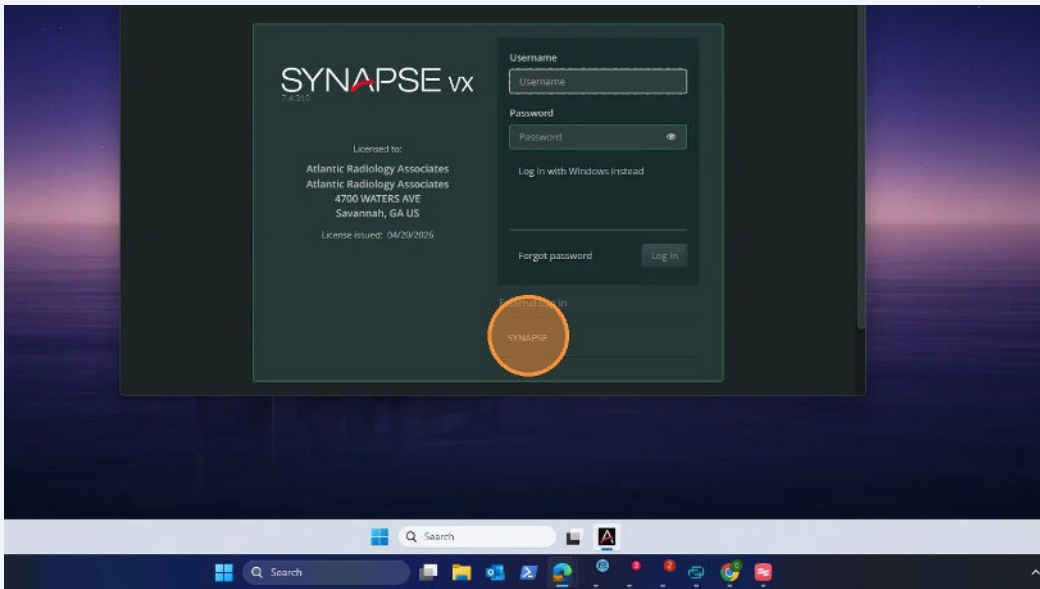
2 Launch Fuji PACS from the desktop.



Alert!

The Menu below may change below when Fuji adjust setting for Go-Live. However, the app is configured with Single Sign-On (SSO). Single Sign-On will use your login to your device to sign you into Fuji PACs.

3 Open the Synapse Desktop Agent. And Click "Synapse"

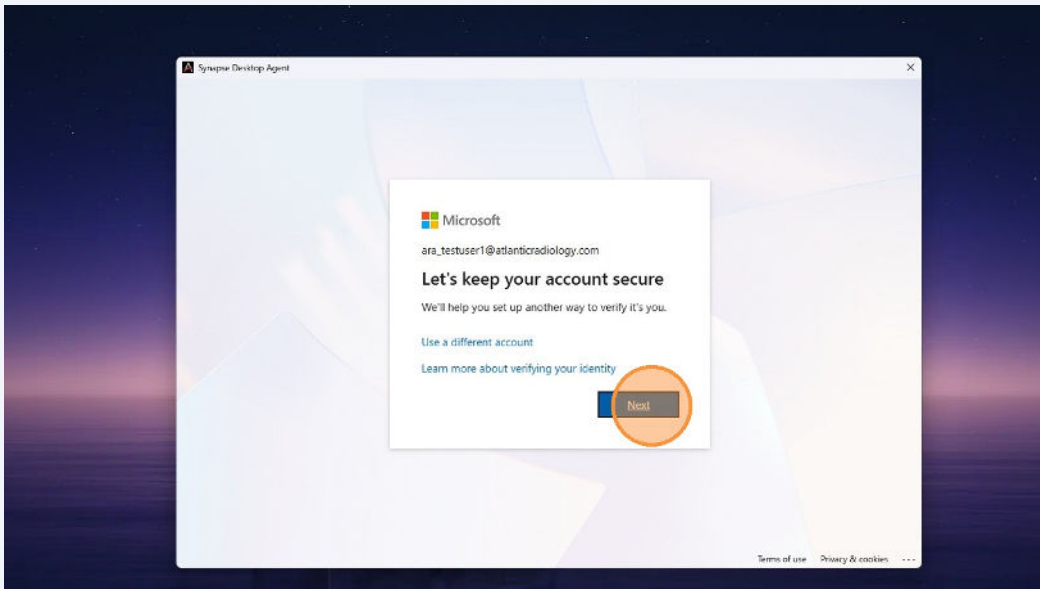


Authenticator Setup



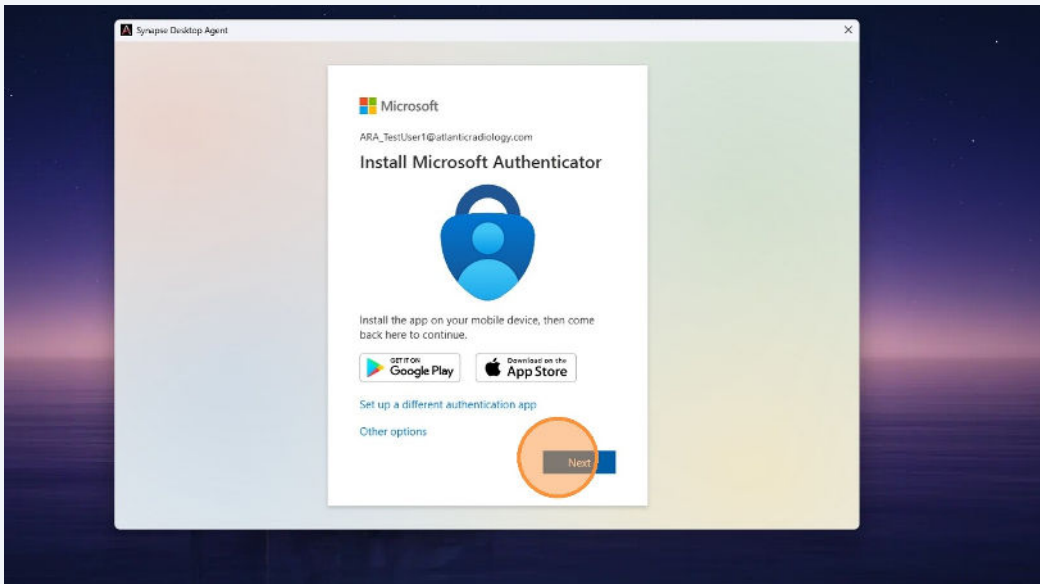
Authenticator Setup will need to be completed on initial sign-in only.

- 4 Click "Next" to begin the account security setup.



- 5 Download the Microsoft Authenticator app on your phone. Once download launch the app.

Click "Next" on the Microsoft Authenticator installation screen.

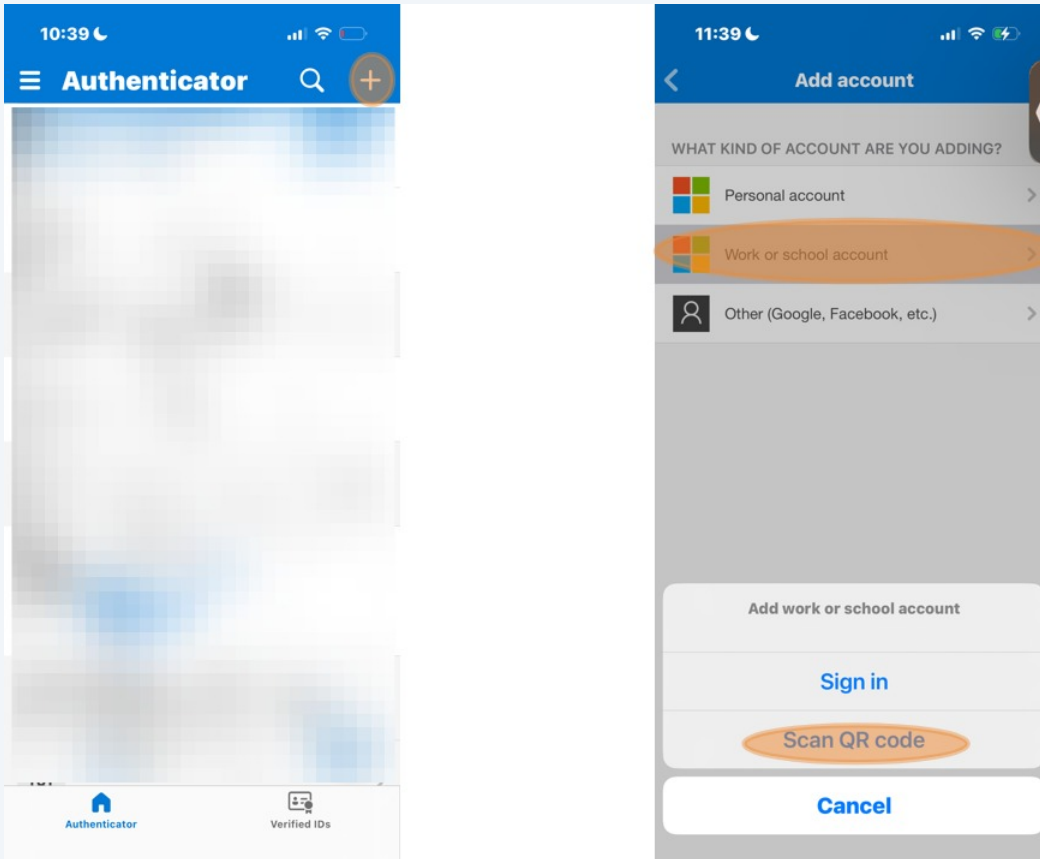


6

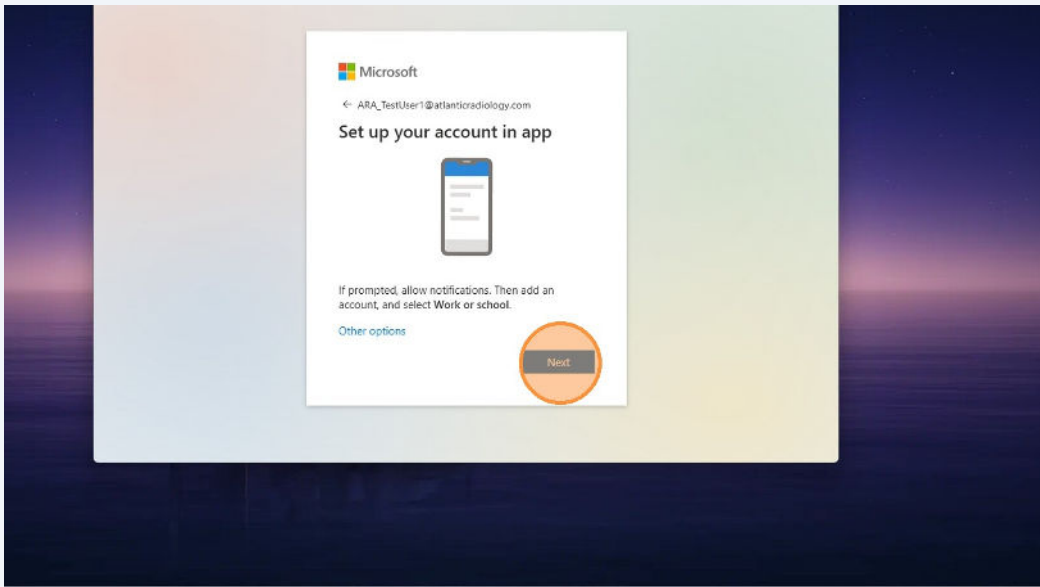
On your Mobile Device with the Microsoft Authenticator app open click the "+"

Then Select "Work or school account"

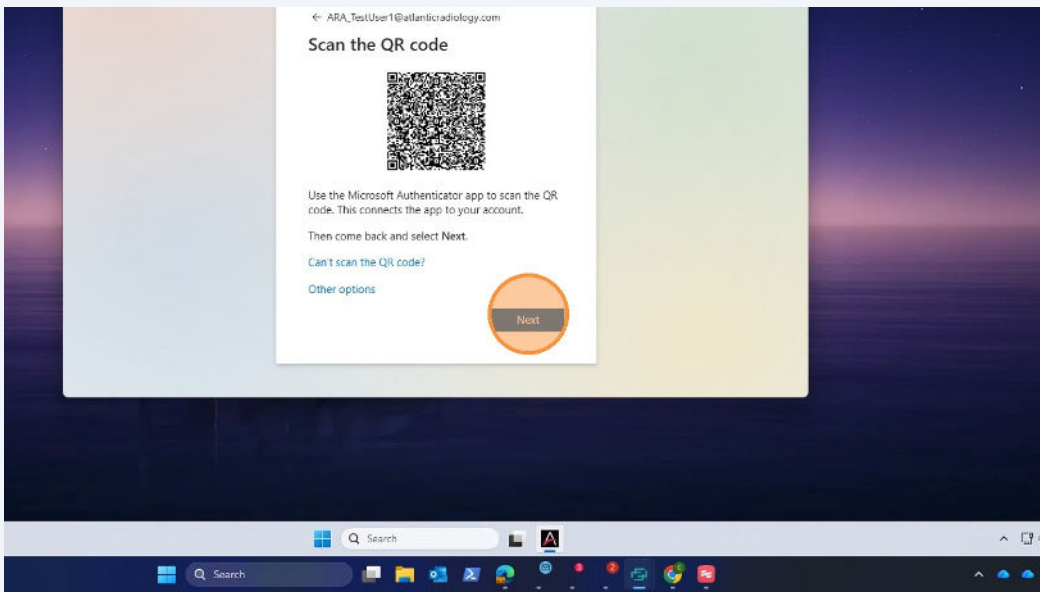
Select "Scan QR Code"



7 Click "Next" to prepare for app account setup.



8 Click "Next" after scanning the QR code with your mobile device.





Alert!

You will need to complete a prompt on your Phone after Scanning QR Code.

9

Click "Done" to complete the Authenticator setup.

